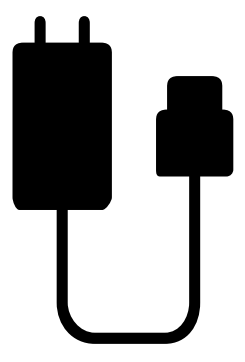
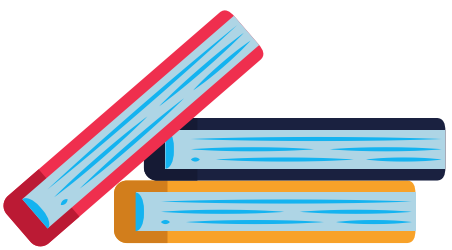


## **GISD Chromebooks**

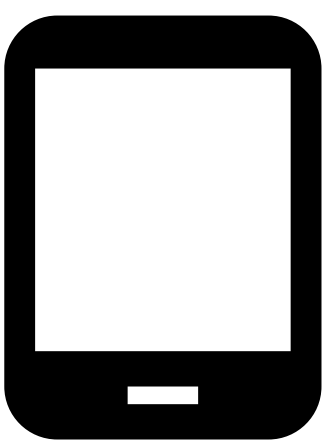
### **Cada Noche yo necesito...**



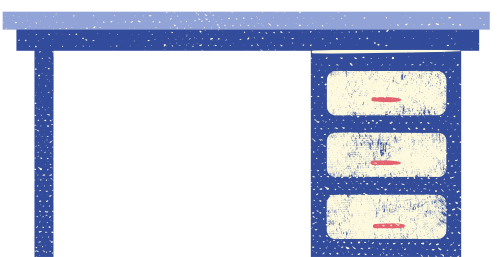
- **Cargue completamente mi computadora (Chromebook). Conecta el cargador y deje que se cargue durante la noche.**



- **Completar todas las tareas que me dio mi maestro.**



- **Manipule y trate la computadora (Chromebook) con cuidado. No puedo agregar etiqueta ni nada más en el interior o el exterior.**



- **Mantenga la computadora (Chromebook) en un escritorio o mesa. Nunca coloque el dispositivo en el suelo ni coloque nada sobre él.**



- **Limpia la computadora (Chromebook) y la funda a diario con un paño suave o un paño ligeramente humedecido.**

### **Proteja la computadora (Chromebook) de::**

- calor extremo
- mascotas
- niños pequeños
- comida
- líquidos
- ambiente ahumado
- otros peligros potenciales

**No deje la computadora (Chromebook) en un automóvil o afuera. Guárdelo de forma segura en su mochila cuando viaje hacia y desde la escuela.**



### **Cada día en la escuela...**

- **Lleva tu computadora (Chromebook) a la escuela.**
- **Cuando no utilice su computadora (Chromebook), guárdelo de forma segura.**



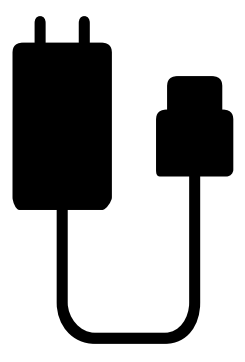
### **Si tiene un problema con su computadora (Chromebook) ...**

**Devuelva su computadora (Chromebook) a la biblioteca donde lo sacó. Le damos otro temporal mientras se repara.**

**ONE:1** GONZALES INDEPENDENT SCHOOL DISTRICT  
**NATION** **N**  
Meeting People Where They Are

## **GISD Chromebook**

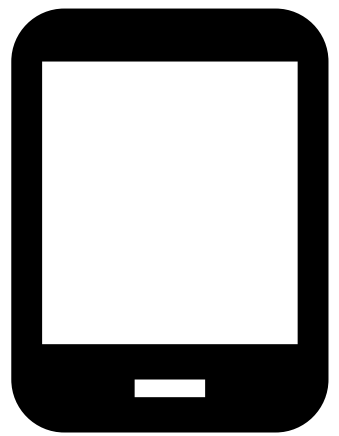
### **Every Night I need to...**



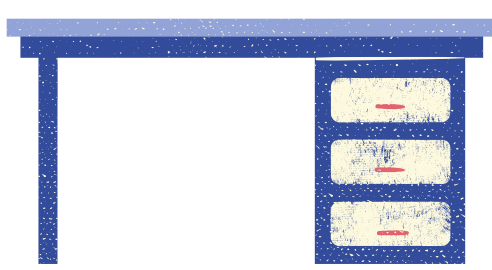
**Fully charge my Chromebook. Plug the charger in and allow it to charge over night.**



**Complete all assignments given to me by my teacher.**



**Handle and treat the Chromebook with care. I may not add stickers, or anything else to the inside or outside.**



**Keep the Chromebook on a desk or table. Never place the device on the floor, or place anything on it.**



**Wipe the Chromebook and the case clean daily with a soft cloth or slightly damp wipe.**

### **Protect the Chromebook from:**

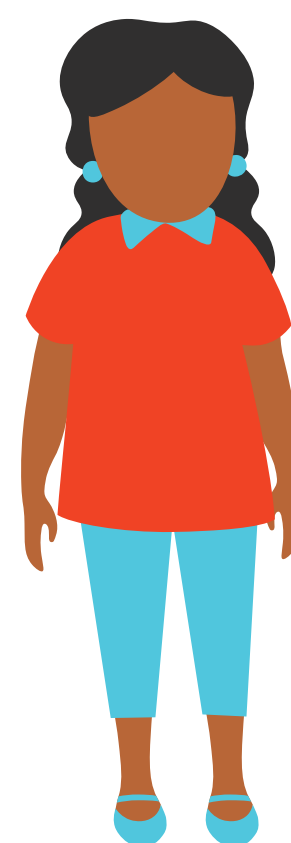
- Extreme heat or cold
- Pets
- Small children
- Food
- Liquids
- Smokey environments
- Other potential hazards

**Do not leave the Chromebook in a car or outside. Keep it safely in your backpack when traveling to and from school.**



### **Every School day...**

- Bring your Chromebook to school.
- When not using your Chromebook, store it safely.



### **If you have a problem with your Chromebook...**

Return your Chromebook to the library where you checked it out. You will be issued a temporary replacement while it is being fixed.